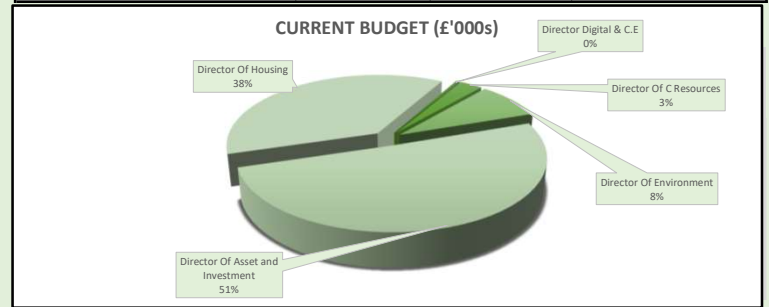


## CAPITAL FINANCIAL DASHBOARD

CODE	CAPITAL PROJECT	£'000s			PROPOSED SLIPPAGE for 23/24
		CURRENT BUDGET	P8 Est Outturn	Variance	
<b>CAPPRO</b>	<b>CAPITAL PROGRAMME</b>	<b>58,340</b>	<b>18,134</b>	<b>(40,106)</b>	<b>(41,934)</b>
	<b>Director Digital &amp; C.E</b>	<b>275</b>	<b>275</b>	<b>0</b>	<b>0</b>
C103	Ict Strategy	100	100	0	0
C155	Software Licences	50	50	0	0
C203	Ict Hardware	125	125	0	0
	<b>Director Of C Resources</b>	<b>1,651</b>	<b>1,651</b>	<b>0</b>	<b>0</b>
C107	E-Financial	51	51	0	0
C110	Asset Management Strategy	100	100	0	0
C217	Brentwood Leisure Centre	1,000	1,000	0	0
C223	Asset Compliance	250	250	0	0
C230	Retrofit - GF	250	250	0	0
	<b>Director Of Environment</b>	<b>4,898</b>	<b>1,958</b>	<b>(2,840)</b>	<b>(2,812)</b>
C125	Vehicle Replacement Programme	1,388	1,378	(10)	0
C128	Play Area Refurbishments	100	0	0	0
C215	Football Hub Development	2,817	5	(2,812)	(2,812)
C149	Home Repair Assistance Grants	5	5	0	0
C150	Disabled Facilities Grant	250	250	0	0
C193	Car Park Improvements	100	100	0	0
C200	Open Spaces Infrastructure	100	100	0	0
C220	Low Emissions infrastructure	138	0	(138)	0
CLA	S106	0	120	120	0
	<b>Director Of Housing</b>	<b>22,007</b>	<b>13,200</b>	<b>(8,807)</b>	<b>(12,663)</b>
CJA	HRA Decent Homes	6,007	9,863	3,856	0
CJB	HRA Affordable Housing	16,000	3,337	(12,663)	(12,663)
	<b>Director Of Asset and Investment</b>	<b>29,509</b>	<b>1,050</b>	<b>(28,459)</b>	<b>(26,459)</b>
C222	Regeneration fund	20,000	0	(20,000)	(18,000)
C228	Baytree Centre redevelopment	4,988	800	(4,188)	(4,188)
C229	Childerditch Redevelopment	4,521	250	(4,271)	(4,271)

DIRECTORATE	CURRENT BUDGET (£'000s)	Outturn (£'000s)	PROPOSED SLIPPAGE for 22/23 (£'000s)
Director Digital & C.E	275	275	0
Director Of C Resources	1,651	1,651	0
Director Of Environment	4,898	1,958	(2,812)
Director Of Asset and Investment	29,509	1,050	(26,459)
Director Of Housing	22,007	13,200	(12,663)
<b>Total</b>	<b>58,340</b>	<b>18,134</b>	<b>(41,934)</b>



TOP 5 Biggest Projects		
Rank	PROJECT	BUDGET (£'000s)
1	Regeneration fund	20,000
2	HRA Affordable Housing	16,000
3	HRA Decent Homes	6,007
4	Baytree Centre redevelopment	4,988
5	Childerditch Redevelopment	4,521